

DASS GUITAR

ABBA MEDLEY (SHORT VERSION)

Handwritten musical notation for the first staff, starting with a circled 'G' and a key signature of three sharps (F#, C#, G#). The time signature is 4/4. A circled 'A' is written above the first measure. The staff contains a melodic line with eighth and sixteenth notes. A double bar line with a '2' above it is at the end of the staff.

Handwritten musical notation for the second staff, continuing the melodic line from the first staff. It features a double bar line with a '2' above it at the beginning and continues with eighth and sixteenth notes.

Handwritten musical notation for the third staff, continuing the melodic line. It features a double bar line with a '2' above it at the beginning and continues with eighth and sixteenth notes.

Handwritten musical notation for the fourth staff, continuing the melodic line with eighth and sixteenth notes.

Handwritten musical notation for the fifth staff, continuing the melodic line. It features a double bar line with a '2' above it at the end of the staff.

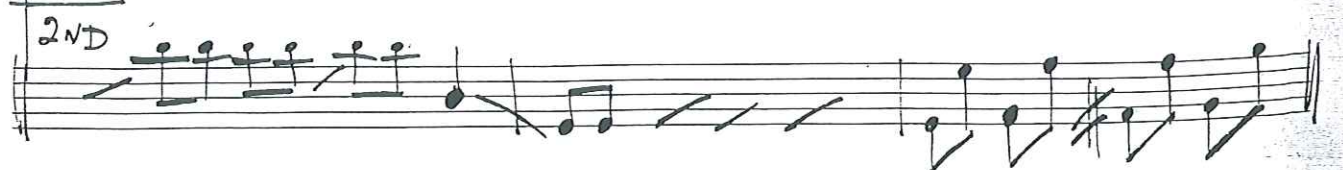
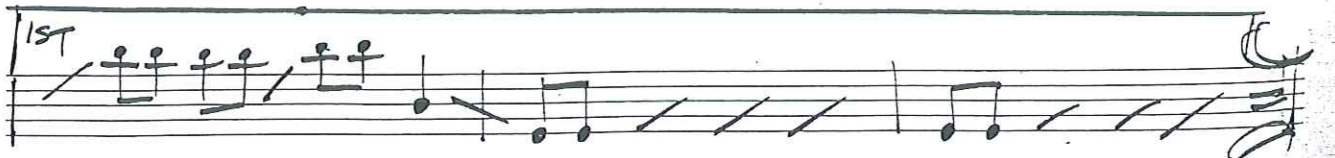
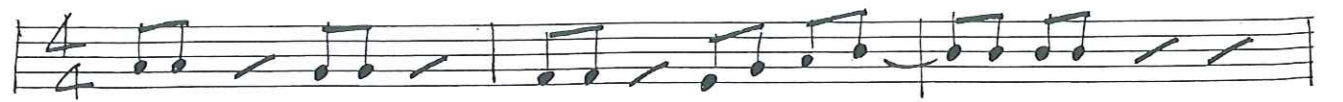
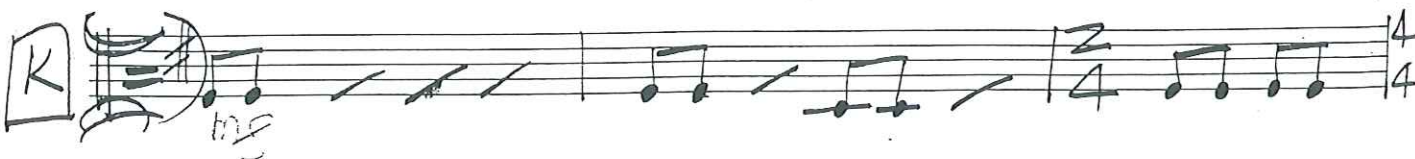
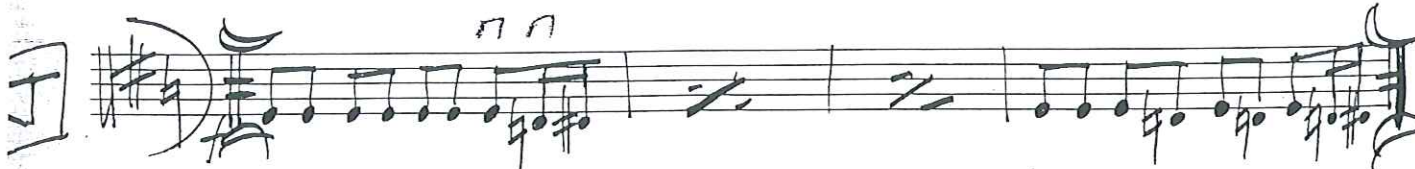
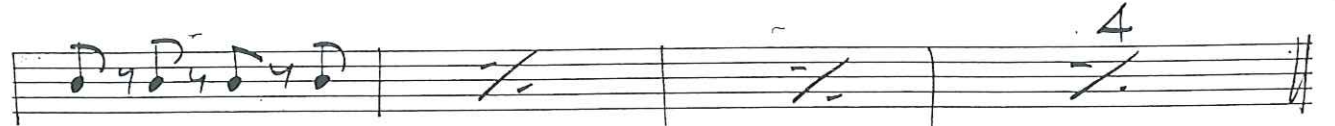
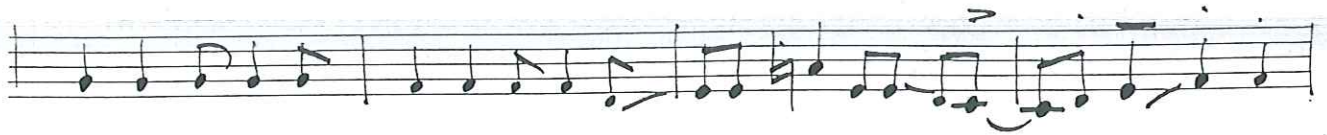
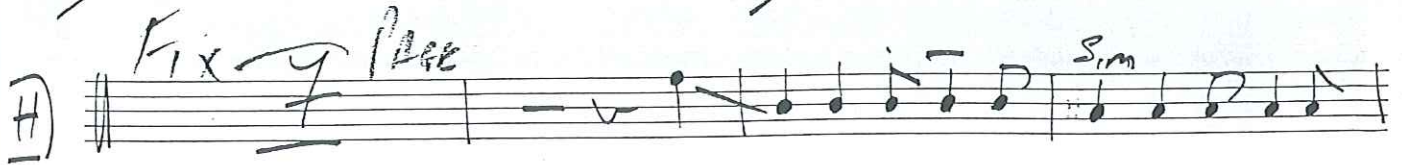
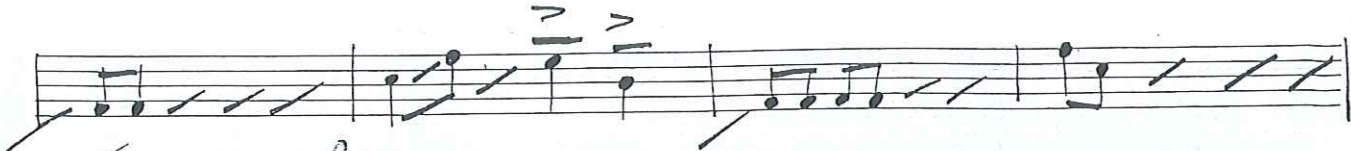
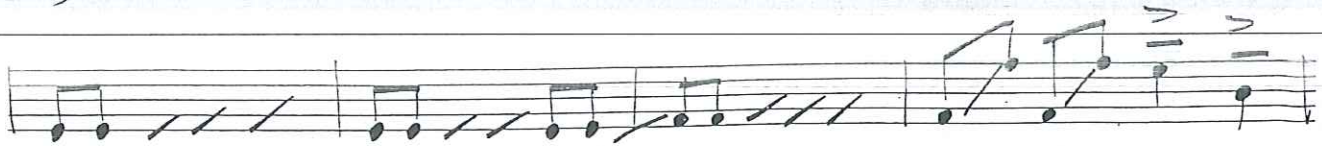
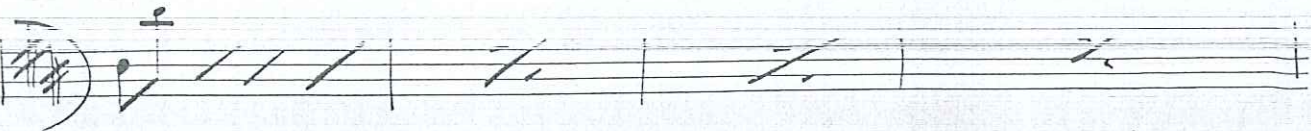
Handwritten musical notation for the sixth staff, continuing the melodic line. It features a double bar line with a '2' above it at the beginning and continues with eighth and sixteenth notes. The tempo marking *Piu Mosso* is written above the staff.

Handwritten musical notation for the seventh staff, starting with a circled 'E' and a key signature of three sharps. The time signature is 4/4. The staff contains a melodic line with eighth notes. A double bar line with a '4' above it is at the end of the staff.

Handwritten musical notation for the eighth staff, continuing the melodic line. It features a double bar line with an '8' above it at the end of the staff.

Handwritten musical notation for the ninth staff, starting with a circled 'G' and a key signature of three sharps. The staff contains a melodic line with eighth notes.

Handwritten musical notation for the tenth staff, continuing the melodic line with eighth notes.



Handwritten musical notation on a grand staff. The upper staff contains a melodic line with various rhythmic values and accidentals. The lower staff shows a chord marked with a circled 'A' above it.

Handwritten musical notation on a grand staff. The upper staff begins with a circled 'M' and contains a rhythmic pattern. The lower staff features a series of rests, with a circled '8' above the final rest. The tempo marking *MENO MOSSO* is written above the staff.

Handwritten musical notation on a grand staff. The upper staff starts with a circled '5' and contains a melodic line. The lower staff contains a complex rhythmic pattern with various note values and rests. A circled '2' is placed above the staff in several locations. The notation concludes with a final note and a double bar line.

Two empty musical staves at the bottom of the page.