

Double Bass

Cead Míle Fáilte

(One hundred thousand welcomes)

Trad - Arr, John Tate

♩ = 92

6

ff
sfz

A

fz

12

19

24

B

mf

30

36

42

C

f

48

Double Bass

54

60

D

67

74

81

E

88

1.

95

2.

101

F

108

115

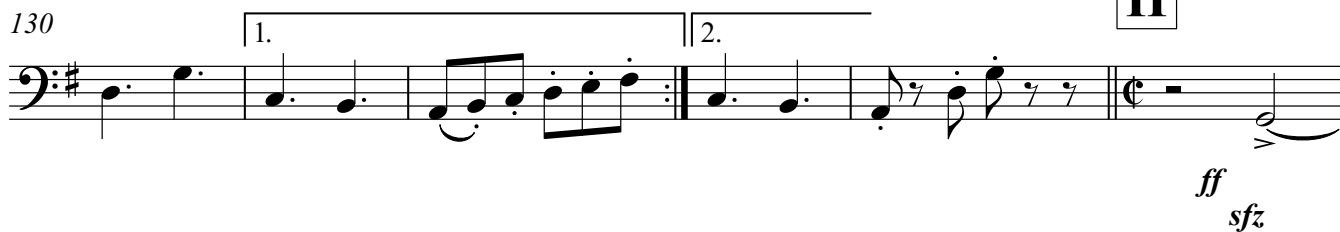
G

Double Bass

122



130



136



142



148



153



158



163



Double Bass

183

arco

ff

188

193

196

Musical score for Double Bass, measures 183-196. The score is written in bass clef with a key signature of one sharp (F#) and a common time signature (C). The music is marked *arco* and *ff*. Measure 183 starts with a bass line of quarter notes: F#2, G2, A2, B2. Measure 184 continues with quarter notes: C3, D3, E3, F#3. Measure 185 has quarter notes: G3, A3, B3, C4. Measure 186 has quarter notes: D4, E4, F#4, G4. Measure 187 has quarter notes: A4, B4, C5, B4. Measure 188 has quarter notes: A4, G4, F#4, E4, followed by a repeat sign. Measure 189 has quarter notes: D4, C4, B3, A3, with a breath mark (>) above the first note. Measure 190 has quarter notes: G3, F#3, E3, D3, with a breath mark (>) above the first note. Measure 191 has quarter notes: C3, B2, A2, G2, with a breath mark (>) above the first note. Measure 192 has quarter notes: F#2, E2, D2, C2, with a breath mark (>) above the first note. Measure 193 has quarter notes: B1, A1, G1, F#1, with a breath mark (>) above the first note. Measure 194 has quarter notes: E1, D1, C1, B1, with a breath mark (>) above the first note. Measure 195 has quarter notes: A1, G1, F#1, E1, with a breath mark (>) above the first note. Measure 196 has quarter notes: D1, C1, B1, A1, with a breath mark (>) above the first note, followed by a double bar line.