

# Get Back

Trombone 1

John Lennon/Paul McCartney  
Arr. Paul O'Brien

Andante Maestoso  $\text{♩} = 76$

2

*f*

Detailed description: This staff contains measures 1 through 7. It begins with a whole rest for two measures, followed by a series of eighth and quarter notes with slurs and accents. The dynamic is marked *f*.

8

A

Detailed description: This staff contains measures 8 through 13. It features a mix of eighth and quarter notes with slurs and accents. Measure 10 contains a boxed section labeled 'A' with a double bar line. The dynamic is *f*.

14

Detailed description: This staff contains measures 14 through 19. It continues with eighth and quarter notes, including slurs and accents. Measure 19 ends with a fermata. The dynamic is *f*.

Allegro  $\text{♩} = 120$

20

B

*p* *cresc.*

Detailed description: This staff contains measures 20 through 25. It starts with a whole rest for two measures, followed by a series of quarter notes with slurs and accents. Measure 20 contains a boxed section labeled 'B'. The dynamic starts at *p* and increases to *cresc.*

26

*f*

Detailed description: This staff contains measures 26 through 32. It features a series of quarter notes with slurs and accents. The dynamic is marked *f*.

33

C

*f*

Detailed description: This staff contains measures 33 through 37. It features a series of eighth and quarter notes with slurs and accents. Measure 33 contains a boxed section labeled 'C'. The dynamic is marked *f*.

38

Detailed description: This staff contains measures 38 through 41. It continues with eighth and quarter notes with slurs and accents.

42

Detailed description: This staff contains measures 42 through 45. It continues with eighth and quarter notes with slurs and accents.

46

Detailed description: This staff contains measures 46 through 48. It continues with eighth and quarter notes with slurs and accents.

49

D

7

Detailed description: This staff contains measure 49, which is a whole rest. It contains a boxed section labeled 'D' and a large number '7' in the center of the staff.

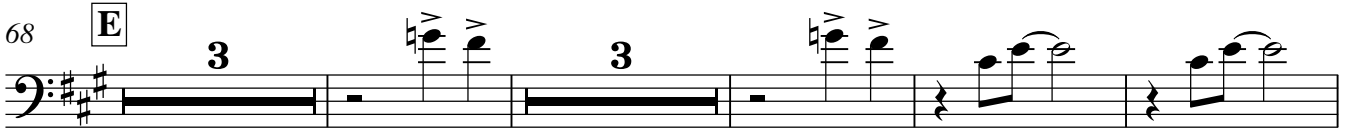
56



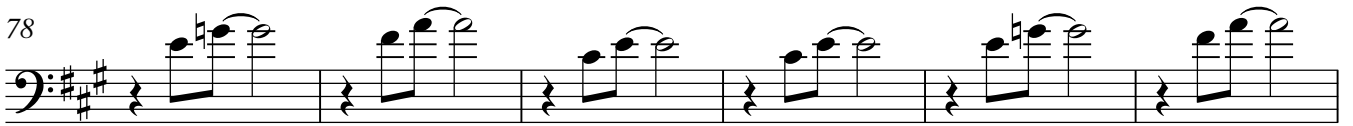
61



68



78



84



93



97



102



115



121



126

