

Contrabass

MATILDA MEDLEY

Tim Minchin

Arranged by Paul O'Brien

Naughty

$\text{♩} = 132$ with a swing $\text{♩} = \text{♩}$

A

mf

5

9

14 **B**

20

25 **C**

30

36 **D**



41



46

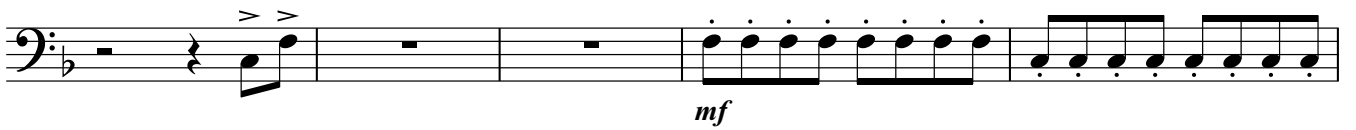


52 **E**



58

F When I Grow Up
♩=80 straight quavers



63



67



71

G Swing it!! ♩=♩♩



76



81

♩=120 straight **H** Revolting Children



