

Alto Saxophone

# Pop Medley No.3

Arranged by Paul O'Brien

Can't Stop The Feeling - Justin Timberlake

♩=113

*mf*

Detailed description: This system shows the first five measures of the piece. It is in 4/4 time with a key signature of two sharps (F# and C#). The tempo is marked as quarter note = 113. The music consists of a steady eighth-note bass line and a melody of quarter notes. The dynamic is marked as mezzo-forte (mf). A fermata is placed over the final measure.

click fingers on offbeats until

7 **A** **A** 8 **B**

*mf*

Detailed description: This system contains measures 6 through 11. Measures 6 and 7 are marked with a '7' and two 'A' boxes. Measures 8 and 9 are marked with an '8' and a 'B' box. The notation includes eighth notes with accents and some beamed eighth notes. The dynamic is marked as mezzo-forte (mf).

23

*f*

Detailed description: This system contains measures 12 through 17. It features a mix of eighth and quarter notes with accents. The dynamic is marked as forte (f). A double bar line with repeat dots is at the end of the system.

Bills - Lunchmoney Lewis

28 **C** ♩=126

Detailed description: This system contains measures 18 through 23. It is in 4/4 time with a key signature of two sharps. Measure 18 is marked with a '4' and a 'C' box. The music consists of a steady eighth-note bass line and a melody of quarter notes. The dynamic is mezzo-forte (mf).

36 **D** 8 **E** 4

*mf*

Detailed description: This system contains measures 24 through 29. Measures 24 and 25 are marked with an '8' and a 'D' box. Measures 26 and 27 are marked with an 'E' box. Measure 28 is marked with a '4'. The notation includes eighth notes and quarter notes. The dynamic is marked as mezzo-forte (mf).

52 **F** 4 4

Detailed description: This system contains measures 30 through 35. Measures 30 and 31 are marked with a '4' and a 'F' box. Measures 32 and 33 are marked with a '4'. The notation consists of quarter notes with a slash and a vertical line through them, indicating a specific articulation or performance instruction.

60 **G** ♩=118

Sax - Fleur East

3

Detailed description: This system contains measures 36 through 38. It is in 3/4 time with a key signature of two sharps. Measure 36 is marked with a '3' and a 'G' box. The tempo is marked as quarter note = 118. The music consists of a steady eighth-note bass line and a melody of quarter notes. The dynamic is mezzo-forte (mf).

64 

67 

69 

71 

73 **H** 

77 

81 **I** 

89 **J** 

91 

93 

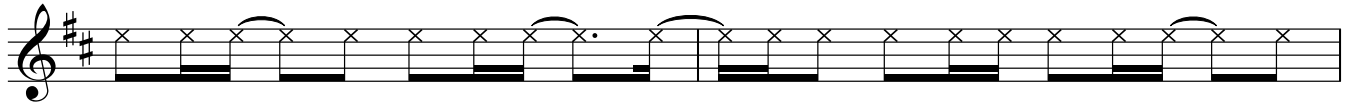
95

C'mon, y'all gotta RAP!!



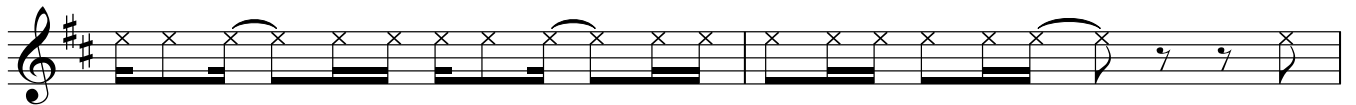
No

97 **K**



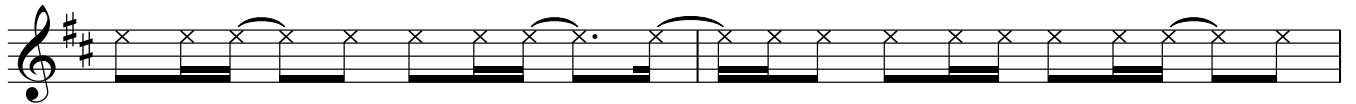
su - per stars or bass gui - tars, - fell - as with sticks do - in' fan - cy tricks, those

99



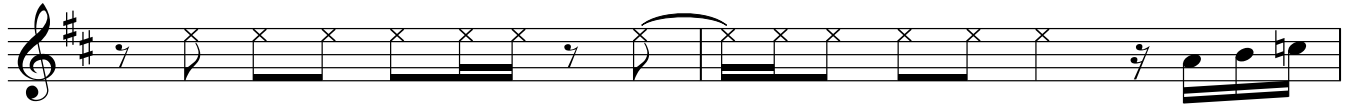
lit - tle guys\_ ma - king all that noise, but you ain't go - in' steal the show.\_ No

101



su - per stars\_ or bass gui - tars, - fell - fell as with sticks do - in' fan - cy tricks, uh,

103



just play that song I know, take \_\_\_ a deep breath lets go. *f*

105 **L**



107



109



111



V.S.

113 **M**

115

117

119

Clap on offbeats until entry

121 **N**  $\text{♩} = 88$  History - One Direction

8

*mf*

135 **O**

142 **P**

*f*

2

148

152 **Q**

*mf*

159

166

2 2