

34 D

38

42 E

46

52 F

Sax - Fleur East

60 G ♩=118

f

66

73 H

mf

81 I

p cresc.

89 J

93

C'mon, y'all gotta RAP!!



97 **K**

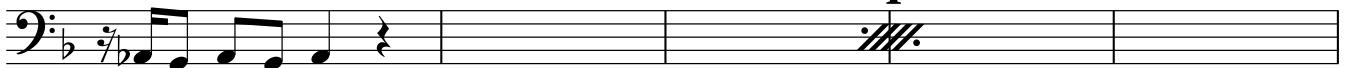
L

8



108

4



113 **M**

4



Clap on offbeats until entry

121

N $\text{♩} = 88$ History - One Direction

2



128



132



136 **O**



139



142



V.S.

144 **P**

f

2

148

151 **Q**

mf

154

157

160

163

166

168

2

2