

SUPERHITS!

Bass Trombone *Born This Way. Firework .Till The World Ends.The Edge Of Glory*

Driving dance beat (♩ = circa 120-126)

5 **Born This Way**

Arranged by Paul O'Brien

3 4

f *mf*

13 **13** 7 21 8

Detailed description: This block contains the first two staves of music. The first staff starts with a bass clef and a 4/4 time signature. It begins with a forte (*f*) dynamic and features a driving bass line. A triplet of eighth notes is marked with a '3' above it. The second staff continues the piece, with a mezzo-forte (*mf*) dynamic. It includes a measure with a '7' above it and another with a '21' above it. The piece concludes with a measure marked with an '8'.

29 **29**

mf

34 8

Detailed description: This block contains two staves of music. The first staff starts at measure 29 with a mezzo-forte (*mf*) dynamic and features a rhythmic pattern of eighth notes with accents. The second staff continues this pattern, ending with a measure marked with an '8'.

45 **45 Firework**

2 *mf*

Detailed description: This block contains one staff of music for the 'Firework' section. It begins at measure 45 with a mezzo-forte (*mf*) dynamic. The music consists of a series of quarter notes with rests, creating a simple, rhythmic pattern. A '2' is written above the first measure.

53 **55**

mf

Detailed description: This block contains one staff of music. It starts at measure 53 with a mezzo-forte (*mf*) dynamic. The music continues with quarter notes and rests. A '55' is written above the first measure.

62 **63**

Detailed description: This block contains one staff of music. It starts at measure 62. The music continues with quarter notes and rests. A '63' is written above the first measure.

70 **71 Till The World Ends** **79**

8

Detailed description: This block contains one staff of music for the 'Till The World Ends' section. It begins at measure 70 with a key signature change to two sharps (F# and C#). The music consists of quarter notes and rests. A '71' is written above the first measure, and a '79' is written above the last measure. An '8' is written above the first measure of the section.

81

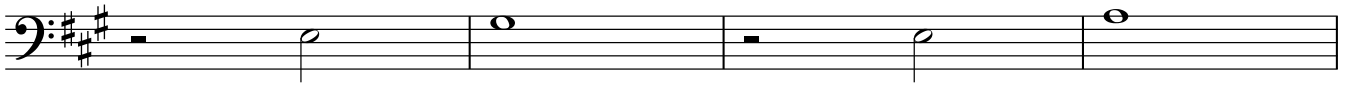
Detailed description: This block contains one staff of music. It starts at measure 81. The music continues with quarter notes and rests.

87 **87** 8 **95** 4

Detailed description: This block contains one staff of music. It starts at measure 87. The music continues with quarter notes and rests. A '87' is written above the first measure, an '8' above the first measure of the section, a '95' above the last measure, and a '4' above the last measure of the section.

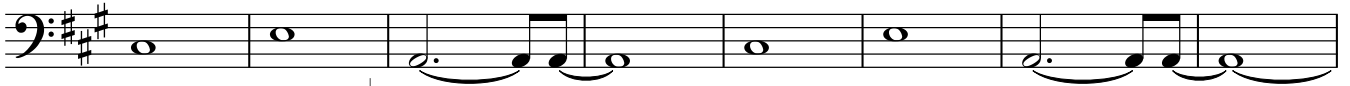
Bass Trombone

99



103

103

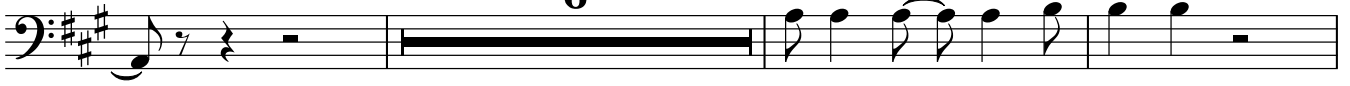


Slightly Slower ♩=ca 130

111

112 The Edge Of Glory

6



mf

120

120

8



132

132



139



144



f