

U2 Medley

Paul Hewson, David Evans, Adam Clayton & Larry Mullen
Arranged by Paul O'Brien

$\text{♩} = 113$ Pride (In The Name of Love)

2

f

6 **A**

f

10

14 **B**

mf

18

22 **C**

f

26 1.

30 2. **D**

34

V.S.

38 **E**

f

Measure 38: Bass line with a chord box labeled 'E'. Measure 39: Bass line with a forte (*f*) dynamic marking. Measures 40 and 41: Continuation of the bass line.

42

Measure 42: Continuation of the bass line.

45

1. 2.

Measure 45: First ending bracket. Measure 46: Second ending bracket. Measure 47: Bass line ending with a fermata.

48 $\text{♩} = 135$ **F** New Years Day

f

Measure 48: Bass line with a tempo marking of quarter note = 135 and a forte (*f*) dynamic marking. Measures 49-51: Continuation of the bass line.

52

Measures 52-55: Continuation of the bass line.

56

Measures 56-59: Continuation of the bass line.

60 **G**

Measures 60-63: Continuation of the bass line with a chord box labeled 'G'.

64

Measures 64-67: Continuation of the bass line.

68

mf

Measures 68-71: Continuation of the bass line with a mezzo-forte (*mf*) dynamic marking.

72 **H**

Measures 72-75: Continuation of the bass line with a chord box labeled 'H'.

76



80

I



84

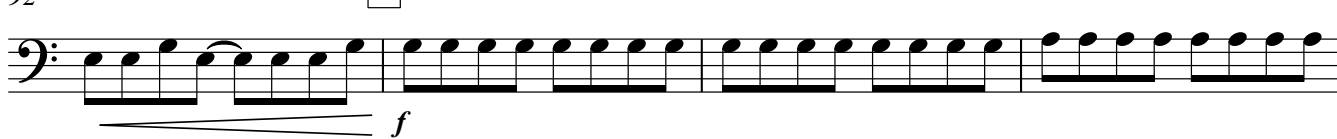


88



92

J



96



100

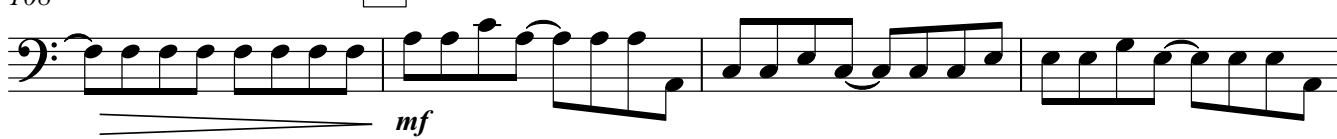


104



108

K



112



V.S.

116 L

120

124

128

131 **rall.**