

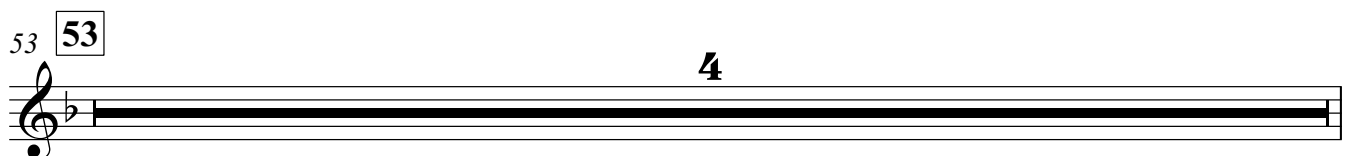
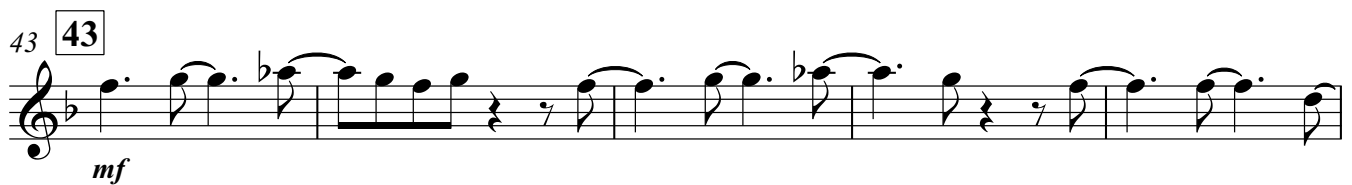
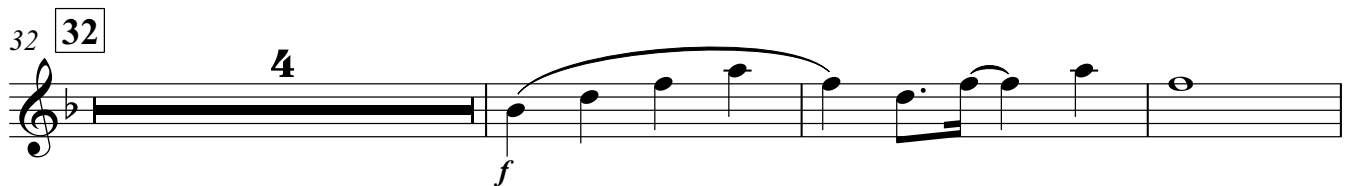
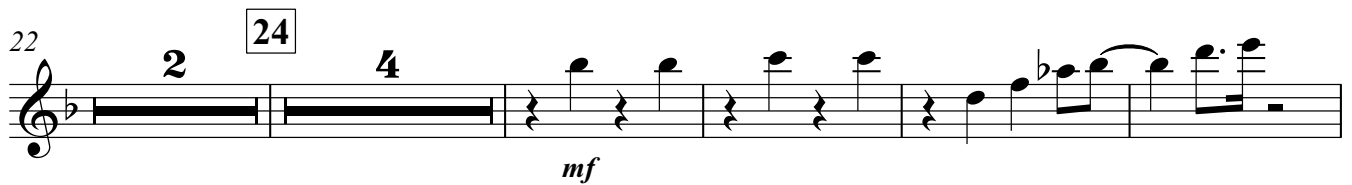
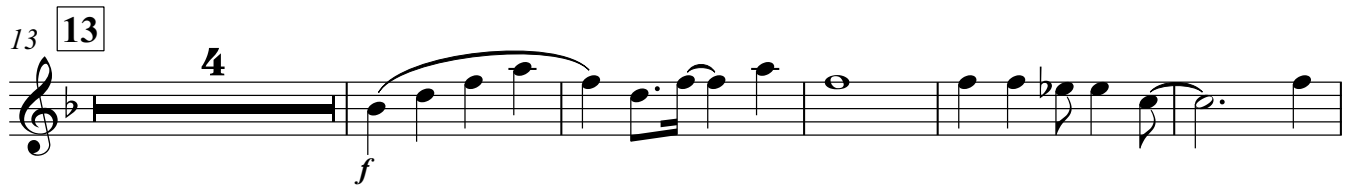
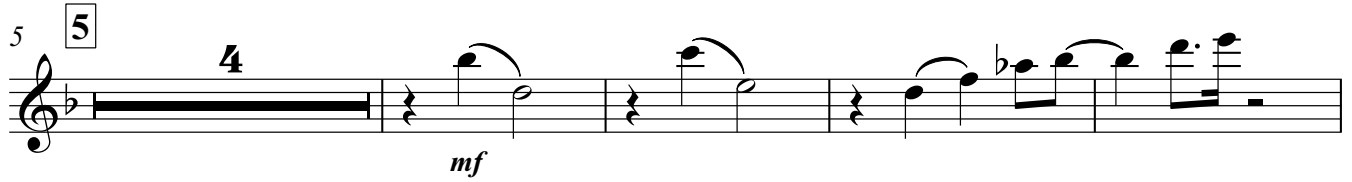
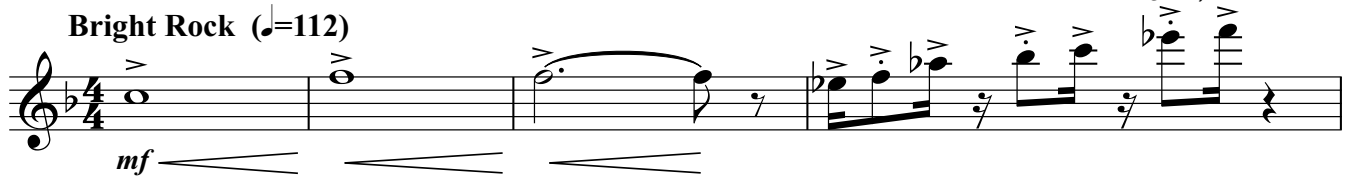
# Anything Is Possible

Flute 2

Marcy Hesler/Michael Picton

Arr. Paul O'Brien

Bright Rock (♩=112)



57

*f*

61

64

*ff*

This musical score for Flute 2 consists of three staves. The first staff (measures 57-60) begins with a treble clef, a key signature of one flat (B-flat), and a common time signature. It features a melodic line starting on G4, moving up to A4, B4, and C5, then descending. A forte (*f*) dynamic marking is present. The second staff (measures 61-63) continues the melodic line with eighth-note patterns. A measure number '61' is enclosed in a box at the start of this staff. The third staff (measures 64-66) concludes the passage with a final melodic phrase and a fortissimo (*ff*) dynamic marking. The piece ends with a double bar line.