

B \flat CLARINET 2

62 8 70
mf "Cell Block Tango"

78 4 *mf* "Tango (straight eighths)"

87 8 95 *mf*

"Roxie"

105 4 109 3 3 *mf* "Faster Swing ($\text{♩} = \text{♩}^3$)"

117 3 3

127 2 3

135 4 *f*

141 5 147 4 *f* "We Both Reached For The Gun" *mf* "Vaudeville 2 Feel (straight eighths)"

f *mf*

B^b CLARINET 2

155



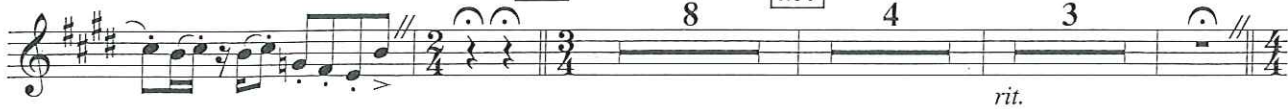
163



mf

172 Waltz-In One

180



rit.

188 Slow



mp accel. e cresc. poco a poco

192



mf cresc. poco a poco

"And All That Jazz"

197 Faster Double Time Feel



accel.

205



213 Slow Swing (♩ = ♩³)



ff