

VIOLIN 3 OR VIOLA

(G)

(H)

(I) DRUM CORP
8

(J) HIGHLAND PIPES
8

(K) 8

(L)

(M)

VIOLIN 3 OR VIOLA

(N) CROSSING BORDERS

First musical staff in treble clef with a key signature of two sharps (F# and C#). It begins with a dynamic marking of *f* (forte). The notation consists of a series of chords, primarily triads and dyads, moving in a stepwise fashion across the staff.

(O)

Second musical staff in treble clef with a key signature of two sharps. It continues the chordal texture from the first staff, featuring a mix of triads and dyads.

Third musical staff in treble clef with a key signature of two sharps. The notation continues with a series of chords, showing some intervallic leaps between notes.

(P)

Fourth musical staff in treble clef with a key signature of two sharps. This staff features a melodic line with eighth notes and quarter notes, interspersed with chords. The melody ends with a series of dotted notes.

(Q)

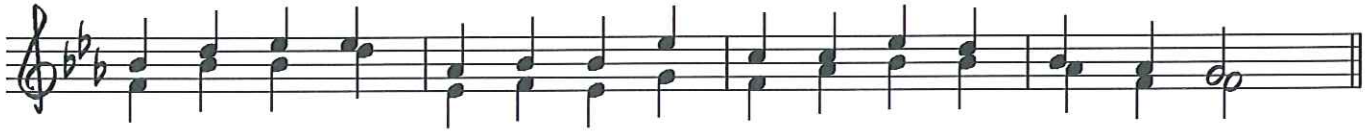
Fifth musical staff in treble clef with a key signature of two sharps. It begins with a melodic line of dotted notes, followed by a trill marked *tr*. The staff concludes with a double bar line and a key signature change to two flats (Bb and Eb), followed by a few chords.

Sixth musical staff in treble clef with a key signature of two flats. It consists of a series of chords, continuing the harmonic progression from the previous staff.

Seventh musical staff in treble clef with a key signature of two flats. It continues the chordal texture, ending with a final chord.

VIOLIN 3 OR VIOLA

(P)



(S)



(T)

