

Dance Evolution

(Medley)

Contrabass

MARK BRYMER
ARRANGED BY PAUL O'BRIEN

With Fanfare ♩=132

Musical notation for the first staff, featuring a fanfare with a dynamic marking of *f*.

Hound Dog

5 **5** 50's Shuffle (♩=154)
accel. (♩=166)

Musical notation for the second staff, starting with a dynamic marking of *mf*.

10

The Twist

15 **17** Straight eights (♩=160)

Musical notation for the fourth staff, starting with a dynamic marking of *mf*.

20

25

Musical notation for the sixth staff, ending with a dynamic marking of *rit.*

Y.M.C.A.

30 **30** Disco (♩=126)

36

Musical notation for the eighth staff, starting with a dynamic marking of *f*.

42

46

accel.

Musical notation for the tenth staff, ending with a dynamic marking of *accel.*

103

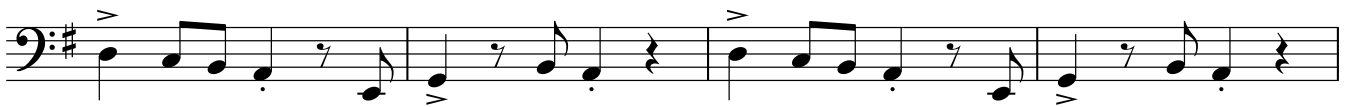
arco **104** **Faster** (♩=128)



108



113 **113**



117



Cotton Eye Joe

121 **121** **Fast Hoedown** (=126)



126



130 **130**



134 **134** **Funky** (♩=92) **Bye Bye Bye**

