

Contrabass

# DISNEY MEDLEY

(A Friend Like Me, I Just Can't Wait To Be King, The Circle Of Life, The Bear Necessities)

"A Friend Like Me" from Aladdin

Arranged by Paul O'Brien

Bright two-beat Swing  $\text{♩} = 99$

Pizz.

6

12

18 **A**

24

29

34 **B**

40

45

V.S.

Contrabass

2

50 **C**



56



62

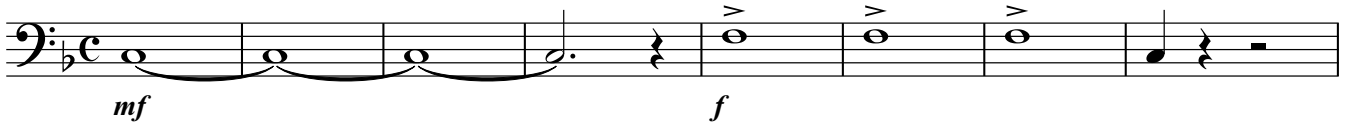


67



"I Just Can't Wait To Be King" from The Lion King

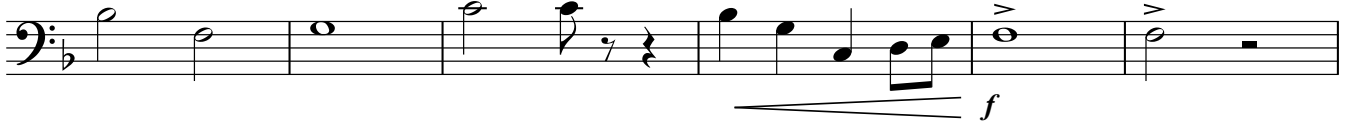
72 **D** ♩=107



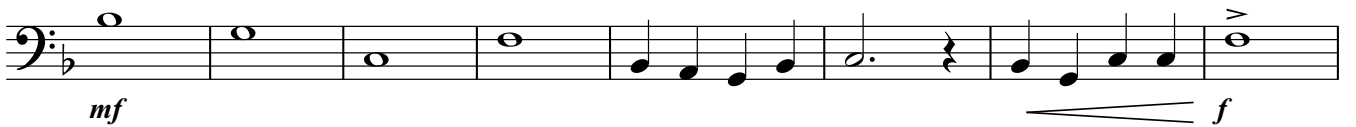
80 **E**



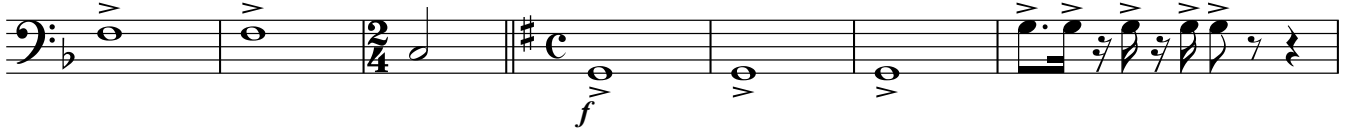
87



93 **F**



101



108 **G**



116

Musical notation for measure 116 in bass clef, key of D major, 2/4 time. The staff contains a sequence of notes: D2, E2, F2, G2, A2, B2, C3, D3, E3, F3, G3, A3, B3, C4, D4. A fermata is placed over the final note, D4. A dynamic marking of *f* is present below the staff. A double bar line with a repeat sign and a '2' above it is at the end of the measure.

122

Musical notation for measure 122 in bass clef, key of D major, 2/4 time. The staff contains a sequence of notes: D2, E2, F2, G2, A2, B2, C3, D3, E3, F3, G3, A3, B3, C4, D4. A fermata is placed over the final note, D4. A dynamic marking of *ff* is present below the staff. The measure ends with a double bar line and a key signature change to D minor.

127  $\text{♩} = 94$

**H** "The Circle Of Life" from The Lion King

Musical notation for measure 127 in bass clef, key of D major, 2/4 time. The staff contains a sequence of notes: D2, E2, F2, G2, A2, B2, C3, D3, E3, F3, G3, A3, B3, C4, D4. A fermata is placed over the final note, D4. A dynamic marking of *mf* is present below the staff. The measure ends with a double bar line.

132

Musical notation for measure 132 in bass clef, key of D major, 2/4 time. The staff contains a sequence of notes: D2, E2, F2, G2, A2, B2, C3, D3, E3, F3, G3, A3, B3, C4, D4. A fermata is placed over the final note, D4. The measure ends with a double bar line.

136

**I**

Musical notation for measure 136 in bass clef, key of D major, 2/4 time. The staff contains a sequence of notes: D2, E2, F2, G2, A2, B2, C3, D3, E3, F3, G3, A3, B3, C4, D4. A fermata is placed over the final note, D4. The measure ends with a double bar line.

140

Musical notation for measure 140 in bass clef, key of D major, 2/4 time. The staff contains a sequence of notes: D2, E2, F2, G2, A2, B2, C3, D3, E3, F3, G3, A3, B3, C4, D4. A fermata is placed over the final note, D4. The measure ends with a double bar line.

145  $\text{♩} = 109$

"The Bear Necessities" from The Jungle Book

Musical notation for measure 145 in bass clef, key of D major, 2/4 time. The staff contains a sequence of notes: D2, E2, F2, G2, A2, B2, C3, D3, E3, F3, G3, A3, B3, C4, D4. A fermata is placed over the final note, D4. The measure ends with a double bar line.

Contrabass

4

146 **J**

*ff*

155 **K**

*ff*

164 **L**

*ff*

173

*f*

182 **M**

*ff*

187

*ff*