

Guitar

# Highland Cathedral

1-2 2 3-10 8 11-18 8 19-26 8

**A** **B** **C**

27-37 **D** **E** ♩=140 11

43

49

**F**

54

60

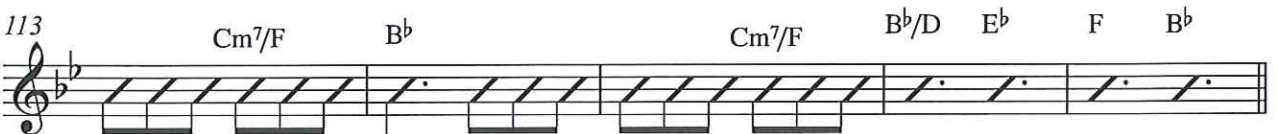
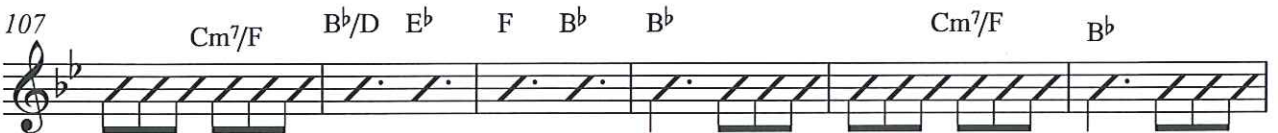
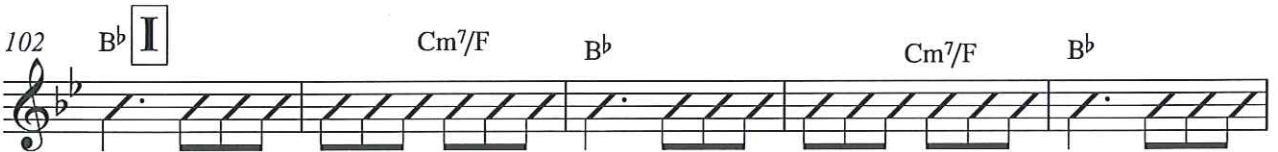
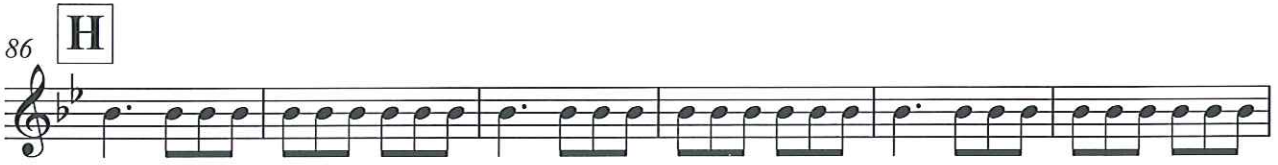
65

70 **G**

76

Detailed description: This is a guitar sheet music page for the piece 'Highland Cathedral'. It features seven staves of music. The first staff contains three measures of whole notes, each with a chord diagram (A, B, and C) above it. The second staff begins with a key signature change to two flats (B-flat and E-flat), a time signature change to 6/8, and a tempo marking of quarter note = 140. It contains a measure of a whole note chord (D) followed by a measure of a whole note chord (E), and then a series of eighth notes. The remaining staves (3-7) consist of eighth-note patterns. The piece concludes with a double bar line.

V.S.



134 **K**

140

145

150 **L**

155

158-165 **M**

8