

# HOLIDAY FAVORITES

(For Concert Band with Opt. Chorus and Strings)

B $\flat$  CLARINET 1

Choral Arrangement by ROGER EMERSON  
Band Arrangement by PAUL LAVENDER

**Grandly**  
*tr*  
*f*  
"Let It Snow! Let It Snow! Let It Snow!"  
*rit.*  
*mf*

**7 Easy Swing** ( $\text{♩} + \text{♩} = \text{♩}^3$ )

**15**

**23**

**33 "Rudolph The Red-Nosed Reindeer"**  
**Rubato (Even 8ths)**

*f*  
*div.*  
*molto rit.*  
*mp*

**41 Light Swing** ( $\text{♩} + \text{♩} = \text{♩}^3$ )

**49**

*div.*

**LET IT SNOW! LET IT SNOW! LET IT SNOW!**

Words by SAMMY CAHN Music by JULE STYNE

Copyright © 1945 by Producers Music Publishing Co. and Cahn Music Co.

Copyright Renewed

This arrangement Copyright © 1995 by Producers Music Publishing Co. and Cahn Music Co.

All Rights on behalf of Producers Music Publishing Co. Administered by Chappell & Co.

All Rights on behalf of Cahn Music Co. Administered by WB Music Corp.

International Copyright Secured All Rights Reserved

**RUDOLPH THE RED-NOSED REINDEER**

Music and Lyrics by JOHNNY MARKS

Copyright © 1949 (Renewed 1977) St. Nicholas Music Inc., 1619 Broadway, New York, New York 10019

This arrangement Copyright © 1995 St. Nicholas Music Inc.

All Rights Reserved

**JINGLE-BELL ROCK**

Words and Music by JOE BEAL and JIM BOOTHE

Copyright © 1957 by Chappell & Co.

Copyright Renewed

This arrangement Copyright © 1995 by Chappell & Co.

International Copyright Secured All Rights Reserved

**SILVER BELLS**

Words and Music by JAY LIVINGSTON and RAY EVANS

Copyright © 1950 (Renewed 1977) by Paramount Music Corporation

This arrangement Copyright © 1995 by Paramount Music Corporation

International Copyright Secured All Rights Reserved

**FROSTY THE SNOW MAN**

Words and Music by STEVE NELSON and JACK ROLLINS

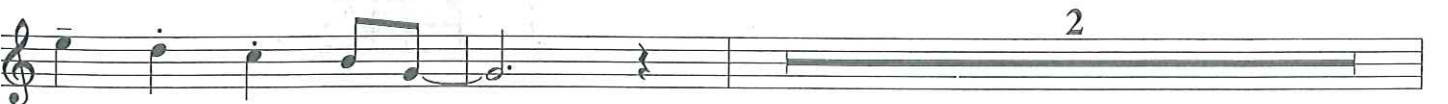
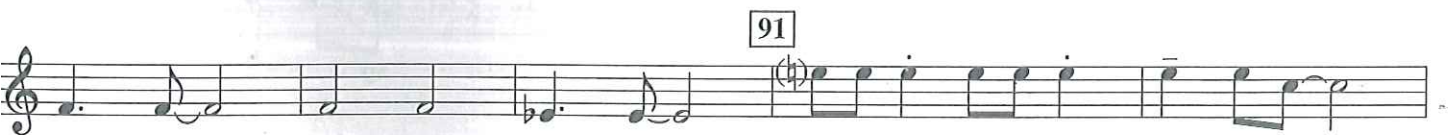
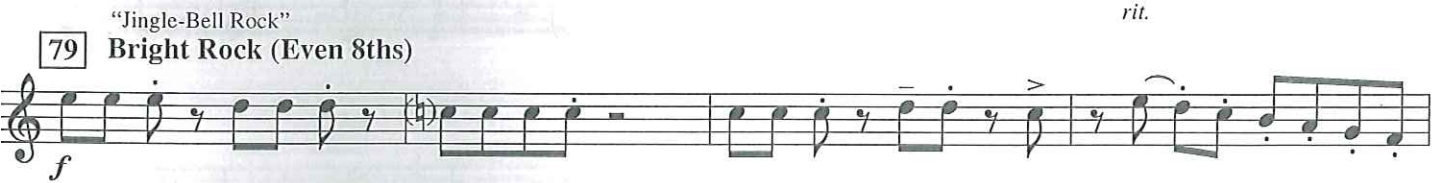
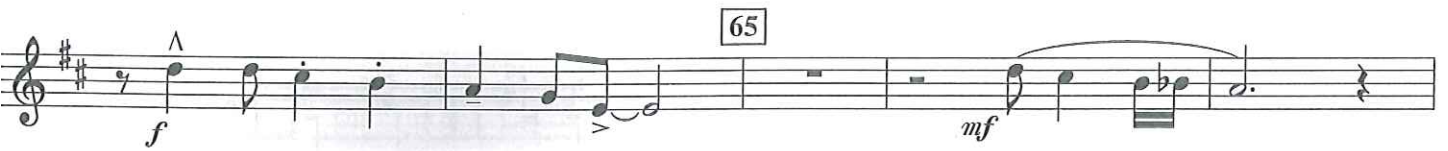
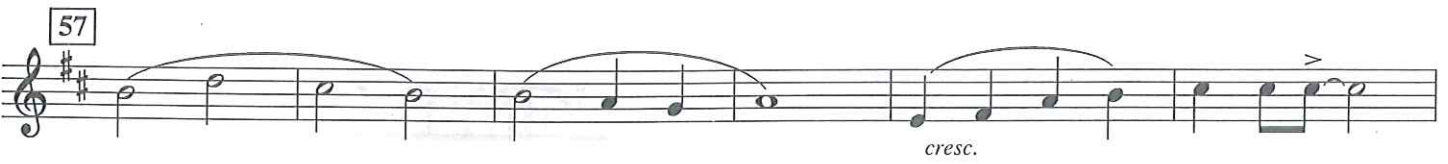
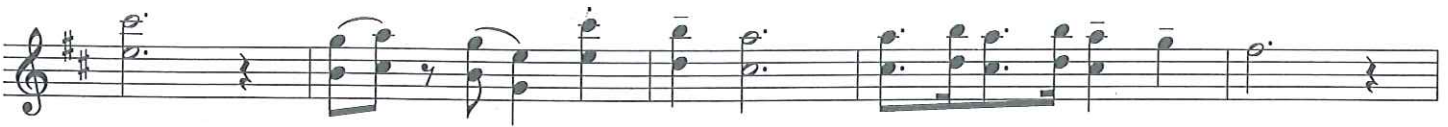
Copyright © 1950 by Chappell & Co.

Copyright Renewed

This arrangement Copyright © 1995 by Chappell & Co.

International Copyright Secured All Rights Reserved

B $\flat$  CLARINET 1



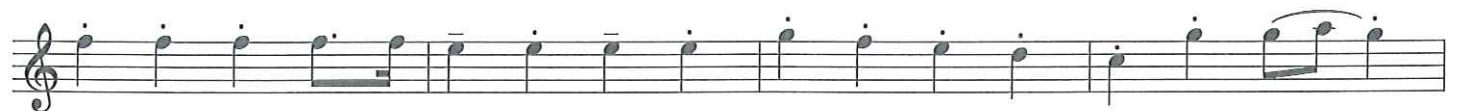
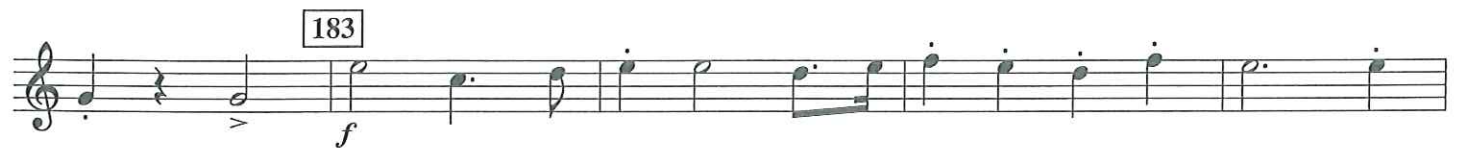
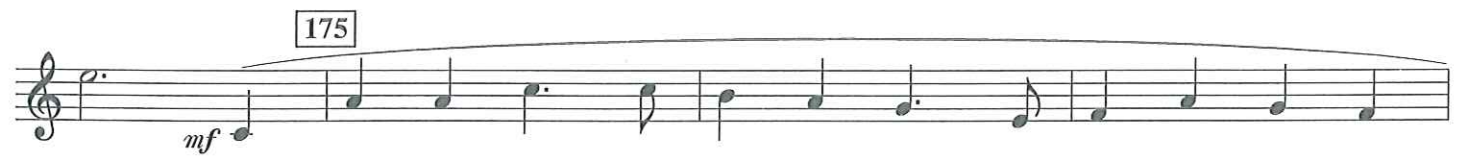
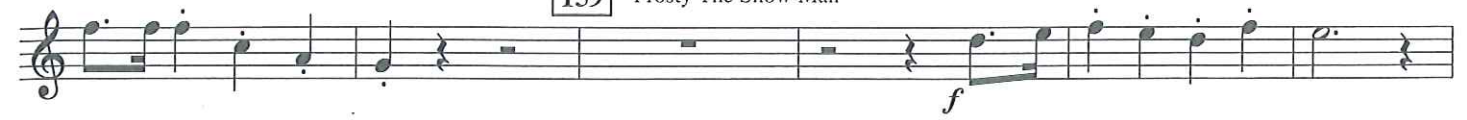
# B $\flat$ CLARINET 1





B $\flat$  CLARINET 1

159 "Frosty The Snow Man"



199 Maestoso (Even 8ths)

