

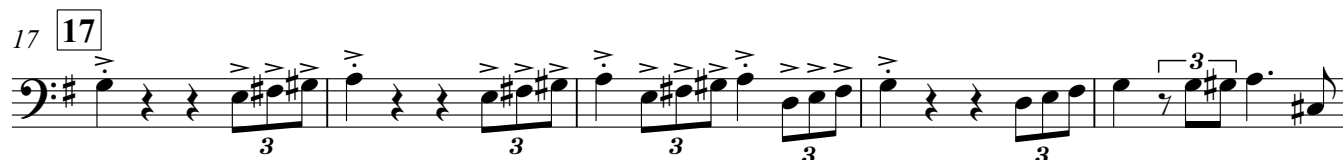
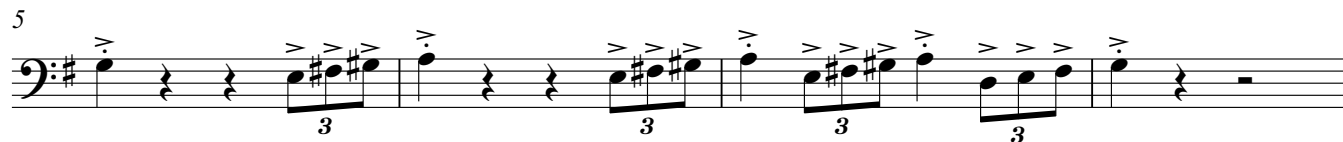
Bass Guitar

Moderately ♩=125 ♩ = ♩

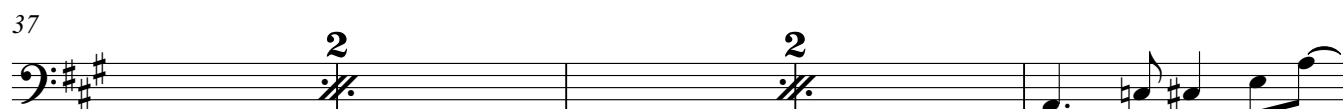
The Addams Family

MONSTER MEDLEY

ARRANGED BY PAUL, O'BRIEN



Faster ♩=147 straight ♩



45



50



55

55

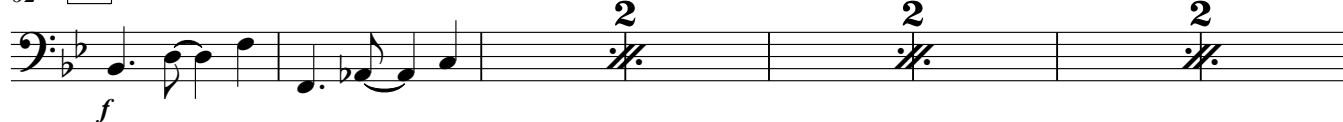


58



62

62



70



77



81



86

86



90



94

94



99



Attack Of The Killer Tomatoes

103

103 Quick March tempo ♩=126

111



119



127

129

135



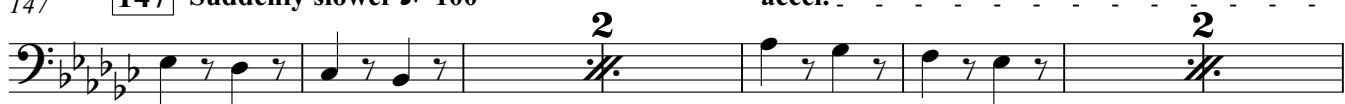
141



147

147 Suddenly slower ♩=100

accel.



155

A tempo ♩=126

164



[illegible]

170 171 172

mf *f*

The bass line of 'The Rose Tree' is written in 3/4 time on a bass staff. It consists of seven measures, each containing a single eighth note. The notes are: G2 (one line below the staff), F2 (one line below the staff), E2 (one line below the staff), D2 (one line below the staff), C2 (one line below the staff), B1 (one line below the staff), and A1 (one line below the staff). The key signature has one flat (Bb), and the time signature is 3/4.

Musical notation for the bass line of 'The Rose Tree'. The staff is in bass clef with a key signature of one flat (B-flat). The melody consists of a series of eighth and sixteenth notes, with a dynamic marking of *mf* (mezzo-forte) indicated below the staff.

The bass line is written on a single staff in bass clef with a key signature of one flat (B-flat). It begins with four measures of rests, each marked with a double bar line and a repeat sign. The fifth measure starts with a forte dynamic marking (*f*) and a half note G2. The sixth measure has a half note F2, and the seventh measure has a half note E2. The eighth measure contains a half note D2, and the ninth measure contains a half note C2. The tenth measure has a half note B1, and the eleventh measure has a half note A1. The twelfth measure has a half note G1, and the thirteenth measure has a half note F1. The piece ends with a final half note E1 in the fourteenth measure.

Musical notation for the bass line of 'The Rose Tree'. The key signature is one flat (B-flat). The notation includes a treble clef, a key signature of one flat, and a series of notes and rests. The melody starts with a half note G2, followed by a quarter note G2, a quarter note A2, and a quarter note B2. There are then four measures of rests, each marked with a double bar line and a repeat sign. The notation is in a single system.

The bass line is written on a single staff in bass clef with a key signature of one flat (B-flat). It begins with three measures of rests, each marked with a double slash (/). The melody starts in the fourth measure with a quarter note G2 (below the staff), followed by a quarter note F2, and then a half note E2. A slur covers the next two notes: a quarter note D2 and a quarter note C2. The final note of the phrase is a quarter note B1 (below the staff). The piece concludes with two measures of rests, each marked with a double slash (/) and a '2' above it, indicating a final cadence.

The bass line of 'The Rose Tree' is written on a single staff in bass clef with a key signature of one flat (B-flat). The melody begins with a quarter note G2, followed by a quarter note F2, and then a half note E2. This is followed by a series of eighth notes: G2, A2, Bb2, A2, G2, F2, E2, D2, C2, Bb1, A1, G1, F1, E1, D1, C1, Bb0, A0, G0, F0, E0, D0, C0, Bb-1, A-1, G-1, F-1, E-1, D-1, C-1, Bb-2, A-2, G-2, F-2, E-2, D-2, C-2, Bb-3, A-3, G-3, F-3, E-3, D-3, C-3, Bb-4, A-4, G-4, F-4, E-4, D-4, C-4, Bb-5, A-5, G-5, F-5, E-5, D-5, C-5, Bb-6, A-6, G-6, F-6, E-6, D-6, C-6, Bb-7, A-7, G-7, F-7, E-7, D-7, C-7, Bb-8, A-8, G-8, F-8, E-8, D-8, C-8, Bb-9, A-9, G-9, F-9, E-9, D-9, C-9, Bb-10, A-10, G-10, F-10, E-10, D-10, C-10, Bb-11, A-11, G-11, F-11, E-11, D-11, C-11, Bb-12, A-12, G-12, F-12, E-12, D-12, C-12, Bb-13, A-13, G-13, F-13, E-13, D-13, C-13, Bb-14, A-14, G-14, F-14, E-14, D-14, C-14, Bb-15, A-15, G-15, F-15, E-15, D-15, C-15, Bb-16, A-16, G-16, F-16, E-16, D-16, C-16, Bb-17, A-17, G-17, F-17, E-17, D-17, C-17, Bb-18, A-18, G-18, F-18, E-18, D-18, C-18, Bb-19, A-19, G-19, F-19, E-19, D-19, C-19, Bb-20, A-20, G-20, F-20, E-20, D-20, C-20, Bb-21, A-21, G-21, F-21, E-21, D-21, C-21, Bb-22, A-22, G-22, F-22, E-22, D-22, C-22, Bb-23, A-23, G-23, F-23, E-23, D-23, C-23, Bb-24, A-24, G-24, F-24, E-24, D-24, C-24, Bb-25, A-25, G-25, F-25, E-25, D-25, C-25, Bb-26, A-26, G-26, F-26, E-26, D-26, C-26, Bb-27, A-27, G-27, F-27, E-27, D-27, C-27, Bb-28, A-28, G-28, F-28, E-28, D-28, C-28, Bb-29, A-29, G-29, F-29, E-29, D-29, C-29, Bb-30, A-30, G-30, F-30, E-30, D-30, C-30, Bb-31, A-31, G-31, F-31, E-31, D-31, C-31, Bb-32, A-32, G-32, F-32, E-32, D-32, C-32, Bb-33, A-33, G-33, F-33, E-33, D-33, C-33, Bb-34, A-34, G-34, F-34, E-34, D-34, C-34, Bb-35, A-35, G-35, F-35, E-35, D-35, C-35, Bb-36, A-36, G-36, F-36, E-36, D-36, C-36, Bb-37, A-37, G-37, F-37, E-37, D-37, C-37, Bb-38, A-38, G-38, F-38, E-38, D-38, C-38, Bb-39, A-39, G-39, F-39, E-39, D-39, C-39, Bb-40, A-40, G-40, F-40, E-40, D-40, C-40, Bb-41, A-41, G-41, F-41, E-41, D-41, C-41, Bb-42, A-42, G-42, F-42, E-42, D-42, C-42, Bb-43, A-43, G-43, F-43, E-43, D-43, C-43, Bb-44, A-44, G-44, F-44, E-44, D-44, C-44, Bb-45, A-45, G-45, F-45, E-45, D-45, C-45, Bb-46, A-46, G-46, F-46, E-46, D-46, C-46, Bb-47, A-47, G-47, F-47, E-47, D-47, C-47, Bb-48, A-48, G-48, F-48, E-48, D-48, C-48, Bb-49, A-49, G-49, F-49, E-49, D-49, C-49, Bb-50, A-50, G-50, F-50, E-50, D-50, C-50, Bb-51, A-51, G-51, F-51, E-51, D-51, C-51, Bb-52, A-52, G-52, F-52, E-52, D-52, C-52, Bb-53, A-53, G-53, F-53, E-53, D-53, C-53, Bb-54, A-54, G-54, F-54, E-54, D-54, C-54, Bb-55, A-55, G-55, F-55, E-55, D-55, C-55, Bb-56, A-56, G-56, F-56, E-56, D-56, C-56, Bb-57, A-57, G-57, F-57, E-57, D-57, C-57, Bb-58, A-58, G-58, F-58, E-58, D-58, C-58, Bb-59, A-59, G-59, F-59, E-59, D-59, C-59, Bb-60, A-60, G-60, F-60, E-60, D-60, C-60, Bb-61, A-61, G-61, F-61, E-61, D-61, C-61, Bb-62, A-62, G-62, F-62, E-62, D-62, C-62, Bb-63, A-63, G-63, F-63, E-63, D-63, C-63, Bb-64, A-64, G-64, F-64, E-64, D-64, C-64, Bb-65, A-65, G-65, F-65, E-65, D-65, C-65, Bb-66, A-66, G-66, F-66, E-66, D-66, C-66, Bb-67, A-67, G-67, F-67, E-67, D-67, C-67, Bb-68, A-68, G-68, F-68, E-68, D-68, C-68, Bb-69, A-69, G-69, F-69, E-69, D-69, C-69, Bb-70, A-70, G-70, F-70, E-70, D-70, C-70, Bb-71, A-71, G-71, F-71, E-71, D-71, C-71, Bb-72, A-72, G-72, F-72, E-72, D-72, C-72, Bb-73, A-73, G-73, F-73, E-73, D-73, C-73, Bb-74, A-74, G-74, F-74, E-74, D-74, C-74, Bb-75, A-75, G-75, F-75, E-75, D-75, C-75, Bb-76, A-76, G-76, F-76, E-76, D-76, C-76, Bb-77, A-77, G-77, F-77, E-77, D-77, C-77, Bb-78, A-78, G-78, F-78, E-78, D-78, C-78, Bb-79, A-79, G-79, F-79, E-79, D-79, C-79, Bb-80, A-80, G-80, F-80, E-80, D-80, C-80, Bb-81, A-81, G-81, F-81, E-81, D-81, C-81, Bb-82, A-82, G-82, F-82, E-82, D-82, C-82, Bb-83, A-83, G-83, F-83, E-83, D-83, C-83, Bb-84, A-84, G-84, F-84, E-84, D-84, C-84, Bb-85, A-85, G-85, F-85, E-85, D-85, C-85, Bb-86, A-86, G-86, F-86, E-86, D-86, C-86, Bb-87, A-87, G-87, F-87, E-87, D-87, C-87, Bb-88, A-88, G-88, F-88, E-88, D-88, C-88, Bb-89, A-89, G-89, F-89, E-89, D-89, C-89, Bb-90, A-90, G-90, F-90, E-90, D-90, C-90, Bb-91, A-91, G-91, F-91, E-91, D-91, C-91, Bb-92, A-92, G-92, F-92, E-92, D-92, C-92, Bb-93, A-93, G-93, F-93, E-93, D-93, C-93, Bb-94, A-94, G-94, F-94, E-94, D-94, C-94, Bb-95, A-95, G-95, F-95, E-95, D-95, C-95, Bb-96, A-96, G-96, F-96, E-96, D-96, C-96, Bb-97, A-97, G-97, F-97, E-97, D-97, C-97, Bb-98, A-98, G-98, F-98, E-98, D-98, C-98, Bb-99, A-99, G-99, F-99, E-99, D-99, C-99, Bb-100, A-100, G-100, F-100, E-100, D-100, C-100, Bb-101, A-101, G-101, F-101, E-101, D-101, C-101, Bb-102, A-102, G-102, F-102, E-102, D-102, C-102, Bb-103, A-103, G-103, F-103, E-103, D-103, C-103, Bb-104, A-104, G-104, F-104, E-104, D-104, C-104, Bb-105, A-105, G-105, F-105, E-105, D-105, C-105, Bb-106, A-106, G-106, F-106, E-106, D-106, C-106, Bb-107, A-107, G-107, F-107, E-107, D-107, C-107, Bb-108, A-108, G-108, F-108, E-108, D-108, C-108, Bb-109, A-109, G-109, F-109, E-109, D-109, C-109, Bb-110,



Monster Medley C B O