

# The Muppets

Violoncello

Highlights from *The Muppets Movie*

Arranged by Paul O'Brien

Brightly  $\text{♩} = 115$

Measures 1-4: Bass clef, key signature of two sharps (F# and C#), 4/4 time signature. Measure 1 starts with a forte (*f*) dynamic. The melody consists of quarter notes: F#2, G#2, A2, B2, C3, D3, E3, F#3.

Measures 5-10: Bass clef, key signature of two sharps. Measure 5 starts with a mezzo-forte (*mf*) dynamic. The melody continues with quarter notes: G#3, A3, B3, C4, D4, E4, F#4, G#4.

Measures 11-12: Bass clef, key signature of two sharps. Measure 11 starts with a mezzo-forte (*mf*) dynamic. The melody consists of quarter notes: A4, B4, C5, D5, E5, F#5, G#5, A5.

**13** The Muppet Show Theme

Measures 13-17: Bass clef, key signature of two sharps. Measure 13 starts with a mezzo-forte (*mf*) dynamic. The melody consists of quarter notes: B4, C5, D5, E5, F#5, G#5, A5, B5.

Measures 18-22: Bass clef, key signature of two sharps. Measure 18 starts with a mezzo-forte (*mf*) dynamic. The melody consists of quarter notes: C6, D6, E6, F#6, G#6, A6, B6, C7.

Measures 23-28: Bass clef, key signature of two sharps. Measure 23 starts with a mezzo-forte (*mf*) dynamic. The melody consists of quarter notes: D7, E7, F#7, G#7, A7, B7, C8, D8.

Measures 29-35: Bass clef, key signature of two sharps. Measure 29 starts with a mezzo-forte (*mf*) dynamic. The melody consists of quarter notes: E8, F#8, G#8, A8, B8, C9, D9, E9.

Measures 36-41: Bass clef, key signature of two sharps. Measure 36 starts with a mezzo-forte (*mf*) dynamic. The melody consists of quarter notes: F#9, G#9, A9, B9, C10, D10, E10, F#10.

Measures 42-54: Bass clef, key signature of two sharps. Measure 42 starts with a moderate shuffle tempo ( $\text{♩} = 135$ ) and a mezzo-piano (*mp*) dynamic. The melody consists of quarter notes: G#10, A10, B10, C11, D11, E11, F#11, G#11.

Measures 55-61: Bass clef, key signature of two sharps. Measure 55 starts with a mezzo-piano (*mp*) dynamic. The melody consists of quarter notes: A11, B11, C12, D12, E12, F#12, G#12, A12.

Measures 62-65: Bass clef, key signature of two sharps. Measure 62 starts with a mezzo-piano (*mp*) dynamic. The melody consists of quarter notes: B12, C13, D13, E13, F#13, G#13, A13, B13.

69 **69**



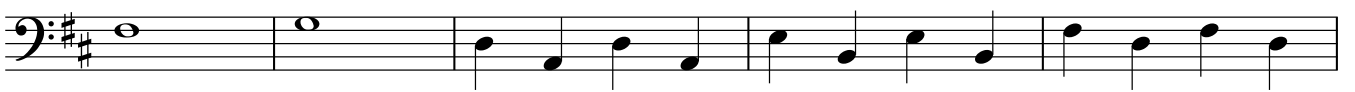
77 **77**



84 **87**



93 **95**



98

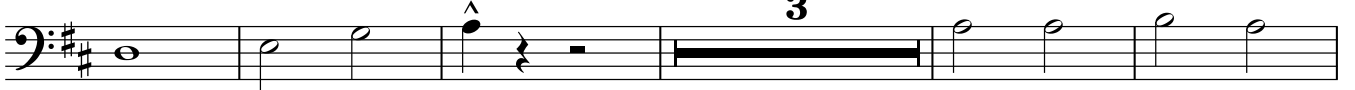


103 **103**



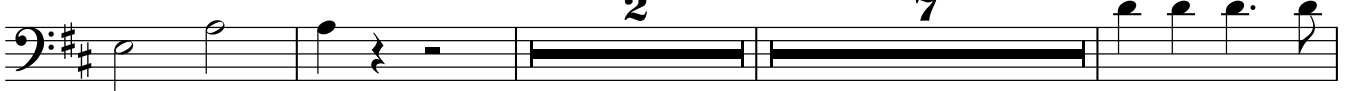
Mah-ná Mah-ná

109 **111** Joyful swing ♩=181

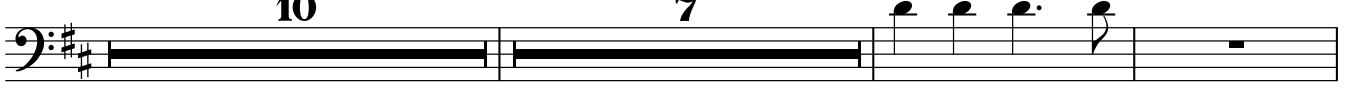


*mf*

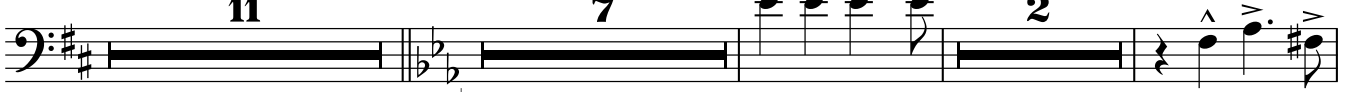
117 **121**



129 **129** **139**



148 **148** **159**

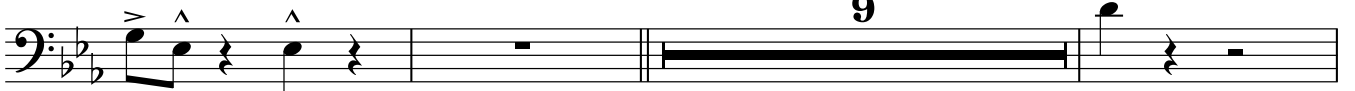


Disco four ♩=129

Straight feel

*f*

170 **172** Me Party



*mf*

182 **182**



186



190 **190**



194



198 **198**



202

